



GREATER MIAMI
JEWISH
FEDERATION

2023-2024
Report to the
Community



**A Challenging Time.
A Community United.**

A Message to Our Community

October 7 changed our world.

As we write this letter at the end of May 2024, an unknown number of men, women and children are still being held hostage by Hamas in Gaza, and millions of Israelis are traumatized and uncertain about their future. At the same time, Jews around the globe are deeply troubled about the psychological, emotional, social and economic impact of this continuing war, as well as the alarming rise in antisemitism and anti-Israel rhetoric that has ensued worldwide since Israel responded to the unprovoked invasion and massacre of its people.

Just as we do in every emergency, Miami's Jewish community came together immediately to respond decisively to these crises — and our commitment is unwavering. More than 1,100 Miamians participated in the historic march in Washington, DC — the largest pro-Israel rally ever in America — and thousands more gathered at the Holocaust Memorial Miami Beach for a Greater Miami Jewish Federation-sponsored rally just three days after October 7. In the first seven months after the attacks, community leaders, clergy and newcomers to Federation joined in eight solidarity missions to Israel, to bring comfort and support to those suffering and to the organizations providing vital aid. In addition, thousands of concerned members of our community donated nearly \$30 million for our Israel Emergency Fund — a noteworthy contribution to the Jewish Federations of North America's national fundraising of more than \$832 million. These dollars are going far to provide vital short- and long-term humanitarian services for Israelis in need. Please see the Israel Emergency Fund section of this *Report to the Community* for some examples of these dollars at work.

While we are coming to the aid of our family in Israel, Federation is also addressing the virulent antisemitism plaguing our college campuses and other institutions. Our Jewish Community Relations Council has been working on numerous fronts this year, from organizing a press conference on antisemitism with 15 community leaders (including 10 local mayors) to hosting a post-October 7 Town Hall meeting with other elected officials and advocating for important legislation to safeguard our people. Our Office of Community Security has also operated around the clock to ensure that our Jewish day schools, synagogues, Jewish community centers, agencies and other organizations are ever-vigilant and prepared to maintain the safety of all who visit or work there.

Despite the new challenges presented this year — along with the continuing concerns about the two-year war between Russia and Ukraine, as well as other issues — Federation's focus on our local community's needs remained constant.

The cost of living in Miami-Dade County is high, forcing many vulnerable individuals and families to make critical choices regarding their most basic needs and requiring the assistance of Federation-supported programs and services. In fact, one in five people in Miami's Jewish community depends on our Federation for some form of financial assistance or access to Jewish life. Fortunately, thanks to the generosity of our donors, the Annual Greater Miami Jewish Federation/UJA Campaign — which this year totaled more than \$27 million — supports a network of agencies that sustain Jewish life in our community.

It all comes down to this: Although we live in a time of great challenges, we truly are a community united and resolute in our common purpose.

In closing, after 43 years of serving our Jewish community — including more than three decades as Federation President & CEO — Jacob Solomon will be retiring on June 30, 2024. Beginning July 1, Scott Kaufman will assume the role of President & CEO - Interim. Scott is a highly regarded, successful Jewish communal professional with many years of Federation management — including more than a decade as CEO of the Jewish Federation of Metropolitan Detroit and Interim CEO for three Federations. Jacob will take on the consulting role of President & CEO Emeritus.

On behalf of a grateful community, we thank you for your support this past year — and always. Together, we pray for the safe return of the hostages, the welfare of the soldiers protecting Israel and for the wellbeing and security of our people everywhere.

Am Israel Chai!




Ariel Bentata
Chair of the Board




Lily Serviansky
General Campaign Chair

Our Impact Every Day, at Home and Abroad

Caring for the vulnerable ... educating and advancing Jewish identity ... building community ... This is the Mission of the Greater Miami Jewish Federation, which works every day in Miami, in Israel and in more than 70 other countries worldwide. In the past year, Federation and our partners impacted thousands of Jewish lives, locally and abroad. The following are examples of our work, funded by the Annual Greater Miami Jewish Federation/UJA Campaign.

538 struggling families in Miami, consisting of **1,149 adults and children**, visited the Jewish Community Services Kosher Food Bank **4,526 times** to put nutritious kosher food on their tables.

\$434,450 was disbursed interest-free to Miami-Dade residents by the Hebrew Free Loan Association to assist with medical and dental care, education, adoption, fertility treatments, housing and much more.

\$2.4+ million in grants, scholarships and teacher benefits were allocated to **11 Jewish day schools and nine congregational schools** in Miami, impacting more than **5,300 students**.

4,310 children received free Jewish-themed books monthly at their homes from PJ Library. Since its inception, PJ Library has delivered **513,113 books** to Miami children.

2,366 people volunteered **3,800 times** at Miami organizations through Federation's Jewish Volunteer Center, contributing **15,200 hours of service** and representing more than **\$483,000 in paid time**.

\$21.7+ million in Homeland Security grants were allocated since 2004 to Jewish institutions in Miami-Dade County, much of which was secured through advocacy efforts by Federation's Jewish Community Relations Council.

63.9 million pounds of rescued fresh fruits and vegetables were distributed by Federation partners to feed **234,000 Israelis** weekly in more than **100 towns and cities**.

11,200+ Ethiopian-Israelis received legal counsel on matters related to discrimination in the areas of employment, education, health, housing and law enforcement through Federation partner Tebeka.

A record **76,261 olim** (immigrants) from **95 countries** made *aliyah* to Israel with help from Federation partner The Jewish Agency for Israel.

76,000 vulnerable and elderly Jews in the former Soviet Union received a variety of welfare and relief supplies and services through Federation partner the American Jewish Joint Distribution Committee.

5,625 youths connected to Jewish life by participating in summer and winter camps in the former Soviet Union supported by Federation partner The Jewish Agency for Israel.



Summary of 2023-2024 Allocations | Local Agencies and Services

Jewish Education

3G Miami	\$25,000
Antisemitism Programs	100,000
Center for the Advancement of Jewish Education (CAJE)	1,249,934
Day Schools	
Day School Strategic Investments	400,024
Hebrew Academy (RASG)	255,738
Hochberg Lower School, Posnack East	72,869
Innovative School of Temple Beth Sholom	20,000
Kloda Whitebook Kesher Academy	158,062
Lehrman Community Day School	118,263
Mechina of South Florida High School	44,398
Rambam Day School of Temple Beth Am	107,910
Scheck Hillel Community School	431,838
The Gordon School of Beth David Congregation	26,679
Yeshiva Elementary/Middle School	148,366
Yeshiva Toras Chaim/Toras Emes Academy of Miami	384,851
Fuente Latina	10,000
Holocaust Memorial Miami Beach	50,000
Holocaust Memorial – Targeted Grants	50,000
Jewish Museum of Florida-FIU	20,000
Keshet	25,000
Sue & Leonard Miller Center for Contemporary Judaic Studies at the University of Miami	15,000
Synagogue School Supplemental Scholarship Program	80,000
Teacher Fringe Benefits Program	255,000

Total **\$4,048,932**

Jewish Identity

Alexander Muss High School in Israel	\$145,645
Base Miami	165,000
BBYO	51,440
Camp Yofi of Camp Ramah Darom	10,000
Community <i>Shaliach</i>	95,000
Dave and Mary Alper Jewish Community Center (Alper JCC Miami) on The Jay Morton-Levinthal Campus	997,546
Florida Hillels (Central Florida Hillel, Hillel at FIU, Hillel at FSU, Hillel of Broward and Palm Beach, Hillels of the Florida Suncoast, UF Hillel, UM Hillel)	463,963
Galbut Family Miami Beach Jewish Community Center (Miami Beach JCC) on the Simkins Family Campus	422,158
High Holiday Welcome Program of the Greater Miami Jewish Federation	90,000
Honeymoon Israel	120,000
Israel Now	125,000
Israel Programs Scholarships	75,104
K Space	5,000
Michael-Ann Russell Jewish Community Center (MARJCC) on the Sanford L. Ziff Campus	913,779
Moishe House Miami	70,500
NCSY	20,000
One Happy Camper	50,000
Onward Israel	122,000
Overnight Camp Scholarships	172,669
PJ Library	160,000
Taglit-Birthright Israel	241,526
The Tribe	8,000
Tzofim (Israeli Scouts) - Shevet Barak	20,000
YEHUDI	5,000

Total **\$4,549,330**

Social, Health and Human Services

College Scholarships (Sylvia Tuman Fund)	\$22,357
Friendship Circle Miami	35,000
Friendship Circle of Miami Beach and North Dade	25,000
Hebrew Free Loan Association of Miami	75,000
Helping Hands Kosher Food Ko-Op	10,000
Holocaust Survivors Program	191,750
Jewish Adoption and Family Care Options (JAFCO)	20,000
Jewish Community Services of South Florida (JCS)	2,403,653
Jewish Volunteer Center of the Greater Miami Jewish Federation (JVC)	122,000
JWorks Miami	65,000
Kosher Food Distributions	120,000
Miami Jewish Health	95,234
Mishkan Miami: The Jewish Connection for Spiritual Support	200,000
Mount Sinai Medical Center	42,420
Repair the World	30,000
Special Needs Initiative (Jewish Abilities Alliance)	80,000
Yodeah	10,000
Youth Mental Health Initiative (BeWell Miami)	100,000

Total **\$3,647,414**

Jewish Incubator Grants*

Chai Lifeline	\$7,500
Children's Bereavement Center	2,500
Eshel	4,500
Friendship Circle of Miami Beach and North Dade	7,500
JAFCO Children's Ability Center	5,000
Jems Academy	7,500
L'Chaim Jewish Hospice Service	4,500
SAMi Sephardic American Mizrahi Initiative	5,125
Sharsheret: The Jewish Breast & Ovarian Cancer Community	4,000
StudentsCare	5,500
Temple Sinai of North Dade	2,700
Tzofim (Israeli Scouts) - Shevet Barak	6,675
University of Miami Hillel	2,500
Welcome Moshiah - The Center	4,500

Total **\$70,000**

Women's Impact Initiative Grants**

Chai Lifeline	\$8,000
Hillel at FIU	6,500
Jewish Adoption and Family Care Options (JAFCO)	9,600
Jewish Education Center of South Florida	5,000
Michael-Ann Russell Jewish Community Center (MARJCC) on the Sanford L. Ziff Campus	2,300
Nicklaus Children's Hospital Foundation	10,000
Organization for Resolution of Agunot (ORA)	9,600
University of Miami Hillel	9,000
Yotzer Ohr Academy of Torah and Art for Girls	10,000

Total **\$70,000**

Community Organization and Central Services

Agency Executives Retirement Plan	\$52,000
Audit and Accounting Fees for Local Agencies	149,625
Building Services	250,000
Contingency Reserve	200,000
Demographic Study	25,000
Elevate Leadership	61,061
Greater Miami Jewish Federation Community Services, Planning & Allocations, Community Security, Administration, Human Resources Development, Outreach Services, etc.	2,406,325
Jewish Community Relations Council (JCRC) of the Greater Miami Jewish Federation	333,089

Total **\$3,477,100**

Total for All Local Agencies and Services **\$15,862,776**

*Jewish Incubator Grants support local organizations, synagogues, agencies and schools that develop innovative and/or impactful programs, services, projects and technologies that enrich Miami's Jewish community and align with Federation's Mission and strategic objectives.

**Women's Impact Initiative Grants support local organizations that inspire and empower Jewish women and girls through programs that focus on social, economic, religious and political equality.

Summary of 2023-2024 Allocations | National and Overseas Agencies and Services

National Agencies and Services

70 Faces Media	\$25,000
A Wider Bridge	2,750
American Jewish Committee	3,000
Anti-Defamation League	4,000
BBYO	2,500
Benjamin Hornstein Jewish Professional Leadership Program at Brandeis University	1,500
Contingency Reserve	131
Foundation for Jewish Camp	6,500
Hebrew Union College School of Jewish Communal Service	1,500
HIAS	11,000
Hillel International	58,000
Israel Action Network	50,000
Jewish Community Centers Association of North America	57,000
Jewish Council for Public Affairs	31,000
Jewish Educational Loan Fund (JELF)	3,000
Jewish Labor Committee	1,000
Jewish War Veterans of the USA	1,000
JPRO Network	2,500
Keshet	2,000
Moishe House	25,000
National Jewish Center for Learning and Leadership (CLAL)	1,500
NCSEJ: National Coalition Supporting Eurasian Jewry	8,500
Neshama: Association of Jewish Chaplains	2,000
OpenDor Media	2,500
Orthodox Union	1,000
Prizmah	3,000
Project Interchange, an Institute of the American Jewish Committee	2,000
The Network of Jewish Human Services	8,000
Union for Reform Judaism	1,000
United Synagogue for Conservative Judaism	1,000
Wurzweiler School of Social Work at Yeshiva University	1,500
Total	\$322,881

Overseas Agencies and Services

Global Partnership: American Jewish Joint Distribution Committee, The Jewish Agency for Israel, the Jewish Federations of North America, World ORT	\$6,094,000
Argentina Welfare & Relief	60,000
Beit Issie Shapiro	63,492
Beit Singer	134,177
Elderly Welfare in the former Soviet Union	277,000
Ethiopian Aliyah	103,000
Ethiopian National Project	83,229
Fund for Victims of Terror	90,000
IsraAid	10,000
Israel and Overseas Department	334,729
Israel Trauma Coalition	45,000
Latin America Welfare & Relief	18,500
Magen David Adom	10,000
Masa Israel Journey	60,000
Miami-Yerucham Partnership2Gether	372,821
Negev Funding Coalition	15,000
Special Needs Organizations	40,309
United Hatzalah	10,000
Venezuela Welfare & Relief	50,000
Yad Sarah	134,177

Total \$8,005,434

Ethiopian-Israeli Initiative

Association of Ethiopian Jews	\$5,000
Israel Trauma Coalition	9,000
Merchavim	35,000
Olim Beyahad	10,000
PUSH Foundation	2,000
Tebeka	18,000
Tech Career	32,000
Unistream	10,000
Yemin Orde Youth Village	10,000

Total \$131,000

Nutritional Support

Chamah	\$13,000
Keren Tzedaka Yeshivat Hesder Yerucham	15,000
Latet	12,000
Leket Israel	41,000
The Jaffa Institute	24,000

Total \$105,000

Religious Diversity

iRep – Israel Religious Expression Platform	\$25,000
Itim	30,000
Meitarim	10,000
Tzohar	20,000

Total \$85,000

Special Needs Organizations

Bar-Ilan University - Music and Community Center (MACOM)	\$15,309
Shalva - The Israel Association for Care and Inclusion of Persons with Disabilities	25,000

Total \$40,309

Women's Amutot Initiative

Adva	\$10,309
Asli White Ribbon	11,900
Association of Rape Crisis Centers	25,000
Atid Bamidbar	13,000
Center for Women's Justice/Mavoi Satum	25,000
Economic Empowerment for Women	11,500
ITWorks	15,000
Jasmine	12,300
Koret (KIEDF)	12,300
La'Ofek	14,000
Ma'ase Center	13,500
Maslan	30,000
Michal Sela Foundation	14,500
Rackman Center at Bar-Ilan University	14,400
The Jerusalem College of Technology	19,300
WePower	25,000
Women's Spirit	23,000
Yozmot Atid	11,000

Total \$301,389

Total for All Overseas Agencies and Services \$8,668,132

Total for All Local, National and Overseas Allocations \$24,853,789

Summary of 2023-2024 Allocations



Federation is a trusted, effective and efficient organization.



More than 91 cents of every donated dollar goes directly to programs and services, making a big impact on those in need.



Israel Emergency Fund: Supporting the People of Israel

In the wake of Hamas' barbaric terrorist attacks in Israel on October 7, 2023, the Greater Miami Jewish Federation has joined with other communities across North America to raise hundreds of millions of dollars and help thousands of Israelis struggling to rebuild their lives. *(Please see the next page of this Report to the Community to learn about dollars raised and allocated to date.)** Since this new reality took hold, we have been helping to support the people of Israel financially, emotionally, psychologically, physically and economically.

1.7 million Israelis

were treated in healthcare facilities and **49,000 individuals** were cared for by mental health organizations.

1.2 million hot meals

were served to displaced Israelis.

538,000 packages

of clothing and basic goods were delivered to Israelis who lost their homes and belongings.

190,000 volunteers

were trained by Federation partner agencies to provide humanitarian relief services.

142,300 stays in temporary housing

were provided for evacuated Israelis forced to leave their homes and communities.

14,600 Israeli children

received educational support to provide them with a sense of normalcy.

8,697 cash grants

were distributed through Federation partner The Jewish Agency for Israel's Fund for Victims of Terror to provide psychological and financial support to Israelis directly impacted.

*As of May 30, 2024



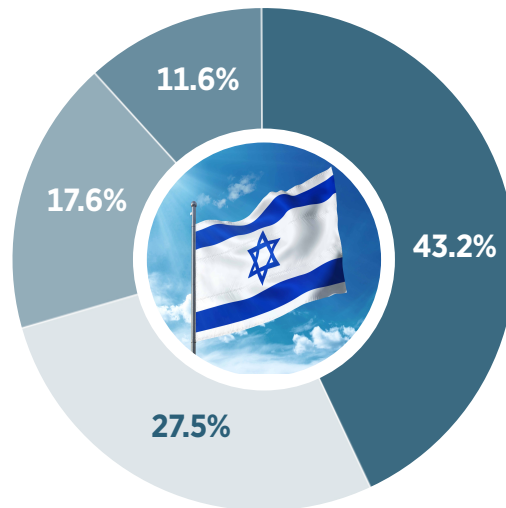
Israel Emergency Fund: Allocations

Through the Jewish Federations of North America's Israel Emergency Fund, Jewish communities across the continent have collectively raised more than \$832 million, with the Miami community proudly contributing nearly \$30 million — one of the most important efforts to assist the people of Israel in modern Jewish history. Eighty-five percent of the funds raised in Miami is being distributed to the national response. In addition, 15 percent is being allocated directly to programs and services in Israel, with a focus on Miami's Partnership community of Yerucham and assisting those who experienced or witnessed gender-based violence.

[Click here](#) for the latest Allocations List from the Jewish Federations of North America.

[Click here](#) for the latest Allocations List directly from the Greater Miami Jewish Federation to programs and services in Israel.

National Allocations by Needs to Date



- 43.2% **Lifeline Services**
- 27.5% **Economic Relief and Recovery**
- 17.6% **Medical and Trauma Relief**
- 11.6% **Community Resilience and Rebuilding**



Greater Miami Jewish Federation Consolidated Statement of Activities

The following is a summary of the Greater Miami Jewish Federation Audited Statement of Activities for the fiscal year ending June 30, 2023. For a copy of the full financial statements and independent auditor's report, please [click here](#).

Revenues, Gains/(Losses) and Other Support

Campaign and Other Contributions, Net	\$33,570,919*
Less: Grants From The Foundation of the Greater Miami Jewish Federation	(5,475,701)
Non-Campaign Contributions and Bequests	42,495,129
Investment Income/(Losses)	28,254,208
Other Income	3,586,198
Total Revenues, Gains/(Losses) and Other Support	\$102,430,753

Expenses

Program (Community) Services	\$88,507,192
Management and General	3,440,819
Fundraising	6,036,752
Total Expenses	\$97,984,763

Changes in Net Assets	\$ 4,445,990
Net Assets at Beginning of Year	413,380,961
Net Assets at End of Year	\$417,826,951

*Federation's 2022 Campaign closed at \$24,794,000. Due to the fact that Annual Campaigns cross multiple fiscal years, the total listed may differ from the amount at which the Campaign closed. This is in accordance with Generally Accepted Accounting Principles (GAAP).

Federation is a volunteer-driven organization.

The Greater Miami Jewish Federation is powered by passionate, caring people who give their time to make our world a better place. More than 1,000 Federation volunteers thoughtfully guide the distribution of financial resources. They use advocacy efforts to leverage Federation dollars, secure additional funding and provide thousands of hours of hands-on assistance to community organizations and their clients.



Federation is a 4-star charity.

The Greater Miami Jewish Federation has earned a 4-star rating — the highest possible — from Charity Navigator, America's largest independent evaluator of charities.



The Foundation: Securing the Future of Our Jewish Community

Thanks to the generosity

of so many donors who have created lasting Jewish legacies, The Foundation has been able to help Federation provide a safety net of services to support our community during these unprecedented times.

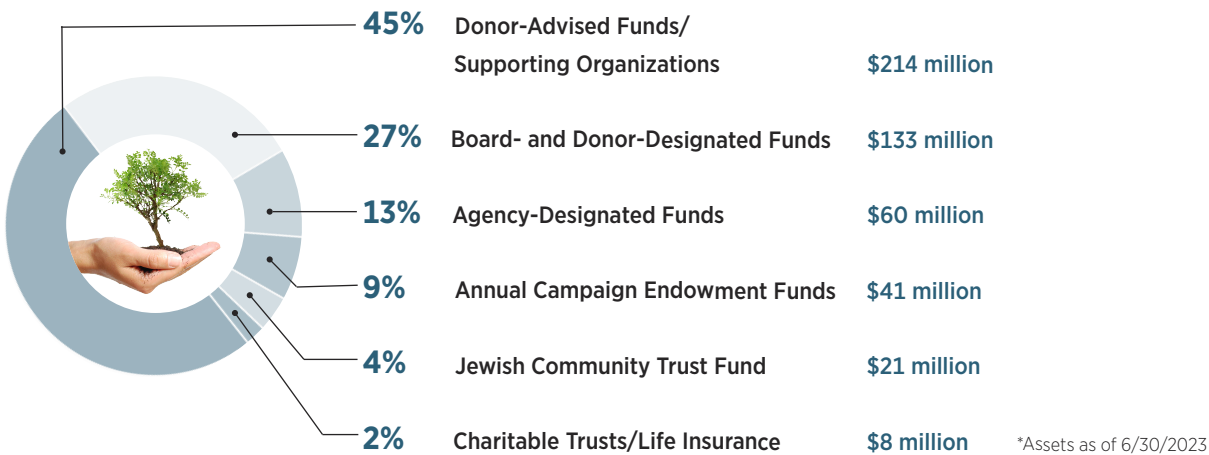


Since 2013, more than 800 individuals and families have signed declarations of intent through **Create a Jewish Legacy**, benefitting Miami's Jewish agencies, synagogues, day schools and Federation and creating more than **\$50 million** in current gifts and estimated expectancies to strengthen our future.

AS OF JUNE 30, 2023, The Foundation held **\$477 million** in assets, representing **787** donor families and organizations.

During 2023, The Foundation received **\$43.3 million** in contributions and bequests to new and existing funds and **\$63.8 million** in grants were distributed to Federation, local beneficiary agencies and other charities.

Foundation Assets* \$477 million



\$10.4 Million Impact on Federation in Fiscal Year 2023

- \$2.3 million: Jewish Community Trust Fund (Unrestricted Funds)
- \$1.2 million: Campaign Endowment Funds (Annual Campaign)
- \$5.6 million: Board- and Donor-Designated Funds (Restricted Purpose)
- \$2.5 million: Donor-Advised Funds/Supporting Organizations (Donor-Designated)

\$11.6 million in total grants made from The Foundation to the Greater Miami Jewish Federation

To learn more about The Foundation and some of the generous donors who have made legacy commitments, [click here](#).

The Jewish Community Trust Fund is Federation's unrestricted endowment made up primarily of bequests, large and small, from donors seeking to enhance our collective Jewish future.



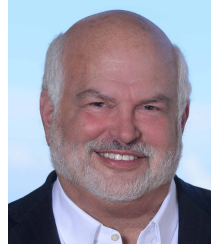
Campaign Endowment Funds (Lion of Judah Endowment Funds/Forever Lion or Forever Pacesetter Funds) are permanent endowments established by donors to perpetuate a gift to the Annual Federation/UJA Campaign. These funds provide support in the name of the donor or loved one to Federation to care for those in need, meet unexpected challenges and plan for the future.

Donor-Advised or Philanthropic Funds are like "charitable bank accounts," allowing donors/families to make charitable contributions when the time is right, while realizing important tax advantages.

Greater Miami Jewish Federation 2023-2024 Officers



Ariel Bentata
Board Chair



Isaac K. "Ike" Fisher
Immediate Past
Board Chair



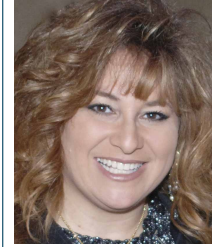
Lily Serviansky
Vice Chair and
General Campaign
Chair



Elise Scheck Bonwitt
Vice Chair



Steven J. Brodie
Vice Chair



Amy Berger Chafetz
Vice Chair and
Planning and
Distribution
Committee Chair



Mojdeh Khaghan Daniai
Vice Chair and Jewish
Community Relations
Council Chair



Michelle Diener
Vice Chair



Laura Koffsky
Vice Chair and
Financial
Management
Committee Chair



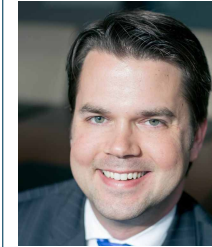
Sidney Pertnoy
Vice Chair and
The Foundation of the
Greater Miami Jewish
Federation Chair



Tracey Spiegelman
Vice Chair and
Israel and Overseas
Committee Chair



Elise Udelson
Vice Chair and
Women's Philanthropy
President



Michael Wagner
Vice Chair and
Administrative
Committee Chair



Ray Ellen Yarkin
Vice Chair



Richard Yulman
Vice Chair



Michelle Ben-Aviv
Secretary



Robert C. Gilbert
Associate Secretary



Robert Hertzberg
Treasurer



Elizabeth Schwartz
Associate Treasurer



Jacob Solomon
President &
Chief Executive Officer

2023-2024 Board of Directors

Leonard Abess
Joe Ackerman
Daniel Ades
Amanda Adler
Matthew L. Adler
Vicki Agron
Isaac Almosny
Marissa Amuial
Tobi Ash
Terri Bachow
Ryan D. Bailin
Saby Behar *♦
Edward Beiner
Sara Bejar
Leslie Benitah
Evan Berger
Helene Berger *
Jaclyn Bergman
Paul Berkowitz
Richard N. Bernstein
Fran Berrin
Robert G. Berrin *♦
Brian L. Bilzin *♦

Joel Birnbaum
Andrew Blank *
Alex Blavatnik
Rep. Elaine Bloom
Norman Braman *♦
Noah Breakstone
Shelly Brodie
Melissa S. Buckner
John M. Bussel
Honorable Amy N. Dean *♦
Rebeca Delaster *
David Deutch
Susan Diamond
Adrian Dubow
Beth Ertel
Jennifer E. Fine
George Feldenkreis *
Susan Weiss Firestone
Rabbi Robyn C. Fisher
Steve Foldes
Julie Franklin
Michael Friedman
Daniel Fujita

Mikki Futernick *
Ellie Ganz *
Harold Gernsbacher
Gary R. Gerson *
Dr. Jaime Ghitelman
Belinda Gilbert
J. Joseph Givner
Amir Gold
Barbara Black Goldfarb *♦
Lisa E. Goldstein
Steven Gretenstein
Shelley Niceley Groff
Barry T. Gurland
Jason Haim
Adriana B. Halac
Mark H. Hildebrandt
Steven Hurwitz
Robin Jacobs
Maty Jamal
Lisa Jerles
Larry Joseph
Ian Kaplan
Clarita Kasson

Evelyn Katz
Ezra Katz *♦
Jessica Katz
Michael L. Katz
Josi Kiblicky
Joshua Kligler
Ruben Kloda *
Dr. Bruce Kohrman
Ilene Kossman
Mark Kravitz
Steven J. Kravitz *♦
Paul Kruss
Alex Krysz
Israel Lapciuc *
Edie Laquer
Murray Laulich
Donald E. Lefton *♦
William Lehman *♦
Alexandra Lehson
David Leibowitz
Lauren Leichtman
Marc A. Levin
Jeffrey Levine

Elyssa Lewis
Mayra Lichter
Diane Lieberman
Nancy Lipoff *
Norman H. Lipoff *♦
Janice Lipton
Mark Meland
Adrienne D. Messing
Gail S. Meyers
Isaac Mizrahi
Lloyd Myers
Ari Newman
Gail J. Newman
Jeffrey E. Newman
Dr. Mark Oren *
Nedra Oren *♦
Jonathan Plutzik
Aaron S. Podhurst *♦
Dorothy Podhurst *
Rabbi Gayle Pomerantz
Tina Price
Irwin Raji
Mycki Ratzan

John Richard
Brian Riemer
Rabbi Mario Rojzman
Lecia Rothman
Michael D. Rudd
Dr. Joel Sandberg
Sheree Savar
David M. Scharlin
Linda Schechter
Jeffrey Scheck *♦
Michael Scheck *♦
Raquel Scheck
Dana Yemin Schragar
Maxine E. Schwartz *
Barbara Shrut
Yosef Shwedel
Morrie Siegel
Mytyl Simancas-Bister
Jacqueline Simkin
Michael R. Simkins
Dr. Joseph Singer *
Scott Singer
Brad Sokol

John Sumberg
Michael Tabacnic
Denise Tamir
Ofar Tamir
Michael Tobin
Michael Wagner
Steven Wagner
Debra Braman Wechsler
Stanley Weinstein
Hedy Whitebook
Brooke Wilensky
Melanie Wisniacki
Tammy Woldenberg
Andrew H. Wolf
Gary J. Yarus
Rabbi Ariel Yeshurun

* Life Member
♦ Past President/Past Chair

2023-2024 Standing Committees

Administrative

Michael Wagner

Agency Support

Jennifer E. Fine
Ari Newman

Audit

Barbara Shrut

Building Operations

Steven Hurwitz

Bylaws and Governance

Rep. Elaine Bloom

Campaign Cabinet

Lily Serviansky

Elevate Leadership

Lisa E. Goldstein

Executive Evaluation and Compensation

Ariel Bentata

Federation/Synagogue Relations

J. Joseph Givner
Rabbi Gayle Pomerantz

Financial Management

Laura Koffsky

The Foundation of the Greater Miami Jewish Federation

Sidney Pertnoy

Holocaust Memorial Miami Beach

Jessica Katz

Investment

Amir Gold

Israel and Overseas

Tracey Spiegelman

Israel Engagement

Dana Yemin Schragar

Jewish Community Relations Council

Mojdeh Khaghan Danial

Jewish Volunteer Center

Elyssa Lewis

Marketing and Communications

Janice Lipton

Miami Beach Branch Board

Matthew L. Adler

Mishkan Miami of the Greater Miami Jewish Federation

Robin Jacobs

Nominating

Jeffrey Scheck

North Dade/Aventura Branch Board

Paul Kruss

Philanthropic Initiatives

Barbara Black Goldfarb

Planning and Distribution

Amy Berger Chafetz

Pledge Redemption

Andrew H. Wolf

South Dade Branch Board

Adrian Dubow

Women's Philanthropy Board

Elise Udelson

Young Leadership Division

Maty Jamal
Isaac Mizrahi

Senior Management Team

Jacob Solomon

President &
Chief Executive Officer
786.866.8600
jsolomon@gmjf.org

Oksana Cardini

Chief Financial Officer
786.866.8474
ocardini@gmjf.org

Abbey Feinberg

Annual Campaign
Director
786.866.8425
afeinberg@gmjf.org

Scott Kaplan

Director of
The Foundation
786.866.8623
skaplan@gmjf.org

Mimi Klimberg

Chief Technology &
Analytics Officer
786.866.8410
mklimberg@gmjf.org

Michelle Labgold

Chief Planning Officer
786.866.8492
mlabgold@gmjf.org

Jeffrey Y. Levin

Executive Vice President
786.866.8420
jlevin@gmjf.org

Bonnie Reiter-Lehrer

Chief Marketing &
Communications Officer
786.866.8401
breiter@gmjf.org

We Gratefully Acknowledge Our

Proud Business Partners

of the Greater Miami Jewish Federation



Platinum Sponsors



Gold Sponsors



Silver Sponsors



The Meltzer Group



Bronze Sponsors



Pearl Sponsors



– As of May 30, 2024



The Mission of the Greater Miami Jewish Federation is to mobilize human and financial resources to care for those in need, strengthen Jewish life and advance the unity, values and shared purpose of the Jewish people in Miami, in Israel and around the world.

Greater Miami Jewish Federation

Stanley C. Myers Building
4200 Biscayne Boulevard
Miami, Florida 33137
305.576.4000
JewishMiami.org

